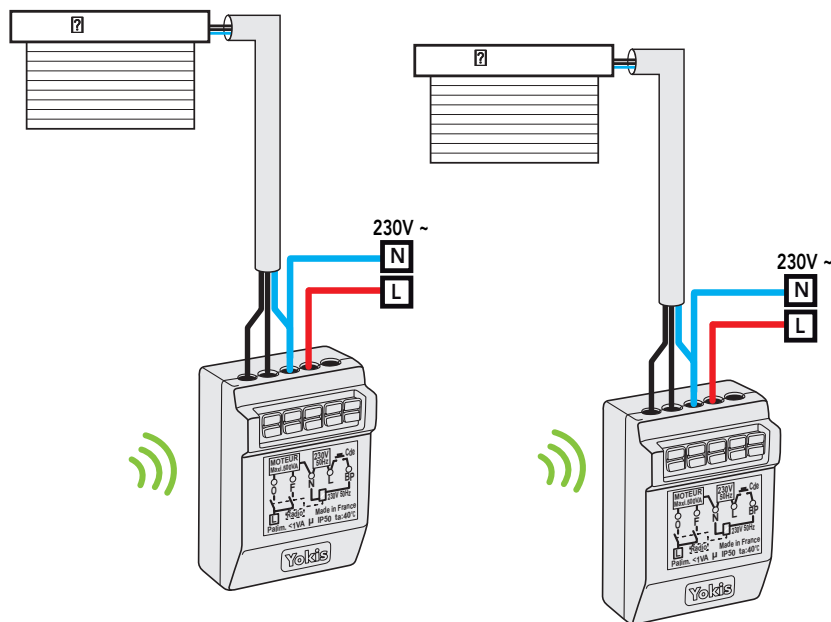
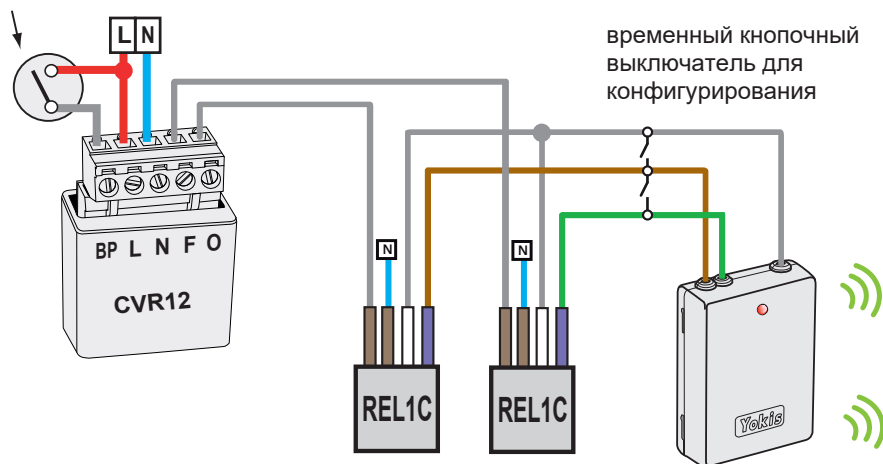


Беспроводное управление при помощи автоматического контакта несколькими приводами жалюзи

АВТОМАТИЧЕСКИЙ КОНТАКТ

Автоматический контакт: таймер, датчик освещенности, анемометр, детектор присутствия и т.п.



ВОЗМОЖНЫИ КОНФИГУРАЦИИ

The connection diagram, with 2 REL1C, together with the procedure described below, allow piloting shutter up movement upon contact closing and down movement upon contact opening.

To reverse controls, namely to pilot shutter up movement upon contact opening and down movement upon contact closing, just swap the two wires connected to 'F' and 'O' terminals of CVR12 module.

A single REL1C can also be connected: the shutter will only move up upon contact closing (connecting left-hand REL1C only to brown wire) or only move down upon contact opening (connecting right-hand REL1C to green wire).

If just one out of the two REL1C has been connected, just configure the connected wire as described in the procedure below.

Connecting the **brown** wire and defining the up movement upon contact closing.

- 1 - Connect a temporary pushbutton to E2BP, across **brown** and **white** wires.
- 2 - Apply 5 short presses. The LED will flash.
- 3 - While the LED is flashing, press the "connect" hole located on MVR500ER back side.
- 4 - The receiver relay will switch for confirmation, and the transmitter LED will stop flashing.
- 5 - If other MVR500ER are present, repeat steps 2-4.
- 6 - Apply **10** short presses on **brown** channel (Configuration Menu). The LED will flash quickly.
- 7 - While the LED is flashing, apply **3** presses on the **brown** channel to define up movement mode. The LED will flash **3** times for confirmation.

Connecting the **green** wire and defining the down movement upon contact opening.

- 1 - Connect a temporary pushbutton to E2BP, across **green** and **white** wires.
- 2 - Apply 5 short presses. The LED will flash.
- 3 - While the LED is flashing, press the "connect" hole located on MVR500ER back side.
- 4 - The receiver relay will switch for confirmation, and the transmitter LED will stop flashing.
- 5 - If other MVR500ER are present, repeat steps 2-4.
- 6 - Apply **10** short presses on **green** channel (Configuration Menu). The LED will flash quickly.
- 7 - While the LED is flashing, apply **4** presses on the **green** channel to define down movement mode. The LED will flash **4** times for confirmation.